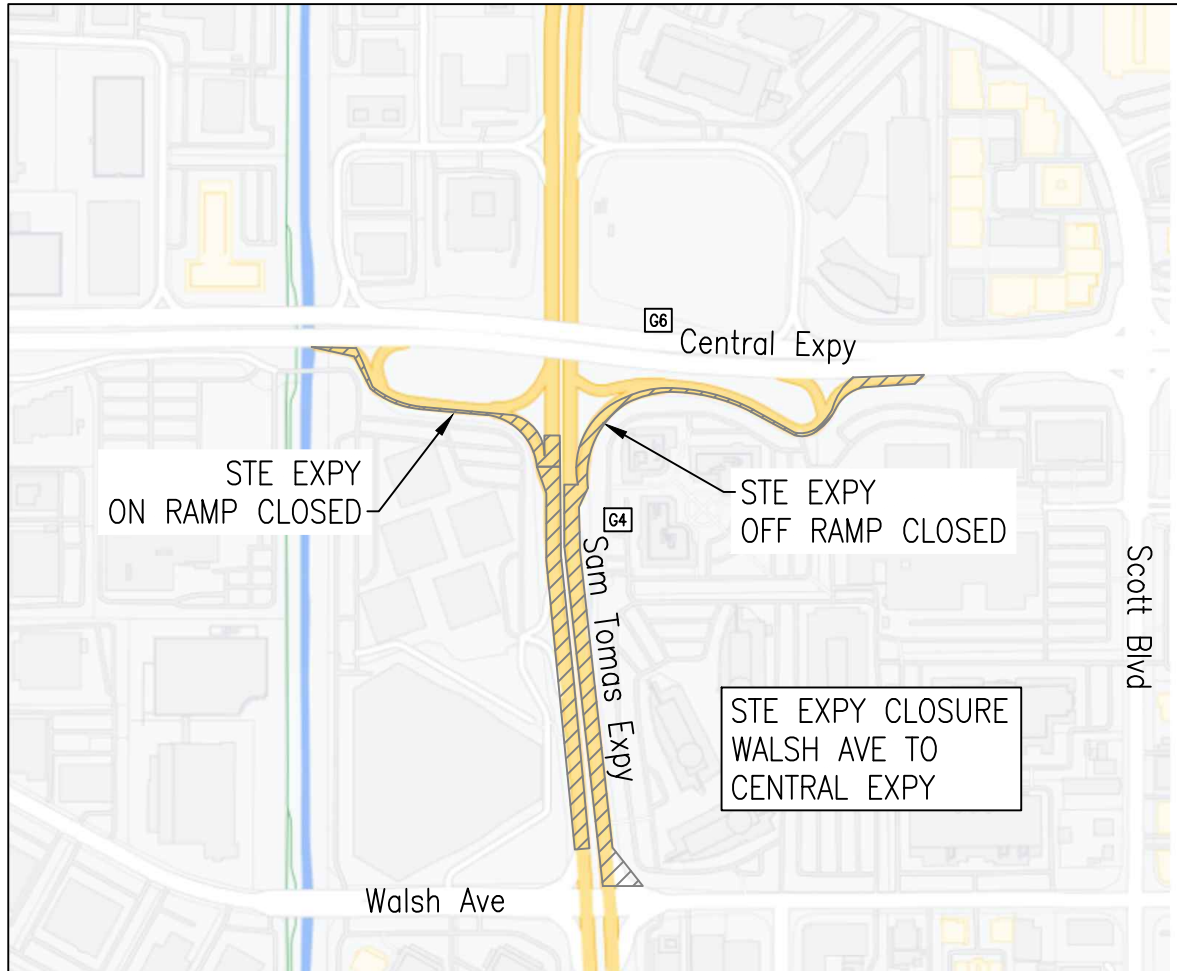


SAN TOMAS EXPRESSWAY CLOSURE SCHEDULE

BEGIN CLOSURE: SATURDAY OCTOBER 2nd 6 AM

END CLOSURE: SUNDAY OCTOBER 3rd 2 AM



SAN TOMAS EXPWY
CLOSED AHEAD
CENTRAL TO WALSH

PHASE 1

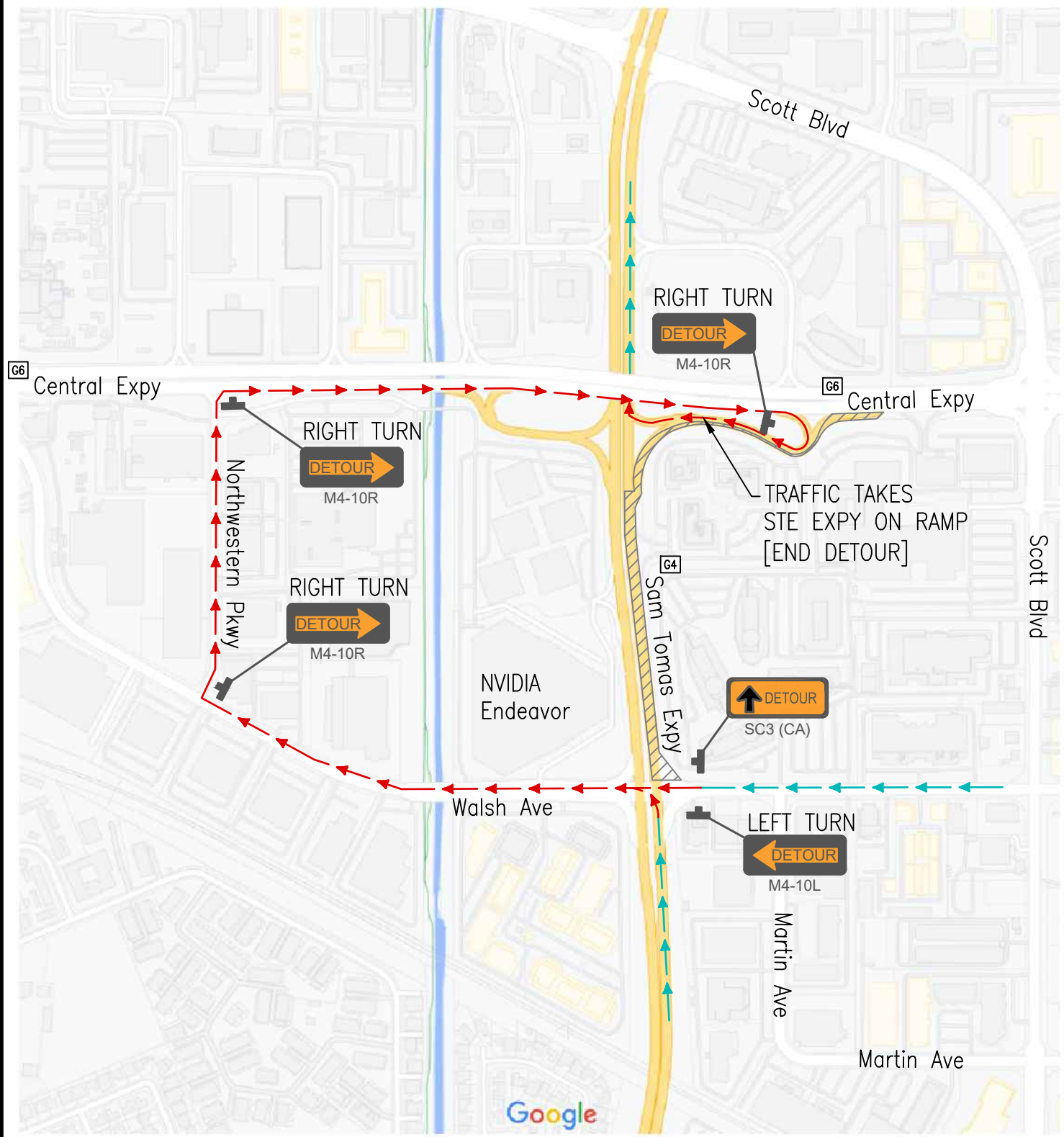
USE DETOUR
DATE 10/02
6 AM TO 2 AM 10/03

PHASE 2

SAN TOMAS EXPY CLOSURE
SCHEDULE




CMS SIGN MESSAGE
2 PHASES

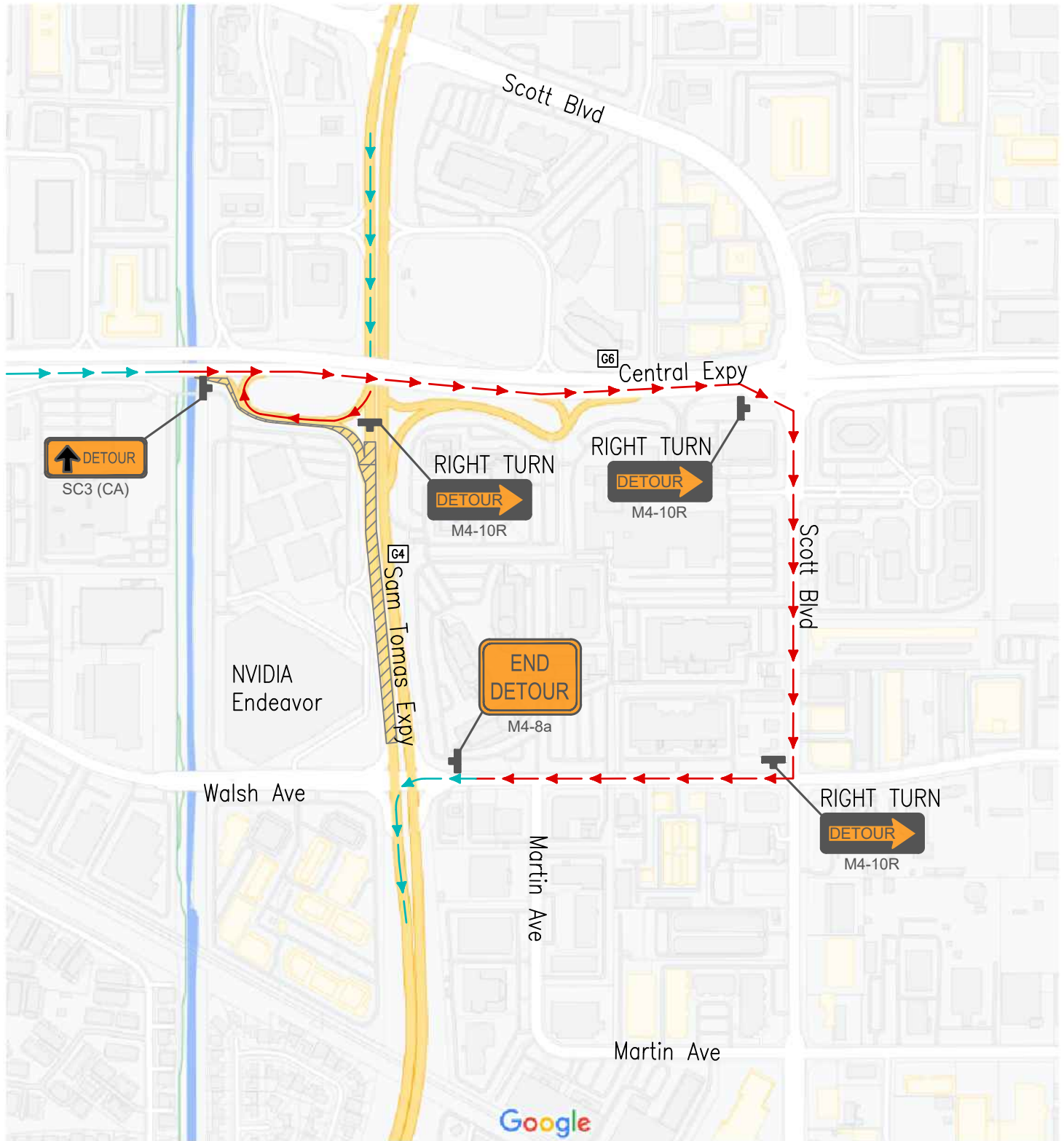
SHT. 1 of 3



Map data ©2021 Google 200 ft

SAN TOMAS EXPY CLOSURE
NORTHBOUND DETOUR ROUTE




LEGEND	
	NB STE Roadway Closure
	Normal Traffic
	Detour Traffic Route



Map data ©2021 Google 200 ft

SAN TOMAS EXPY CLOSURE
SOUTHBOUND DETOUR ROUTE

LEGEND

-  SB STE Roadway Closure
-  Normal Traffic
-  Detour Traffic Route