

# Capitol Expressway



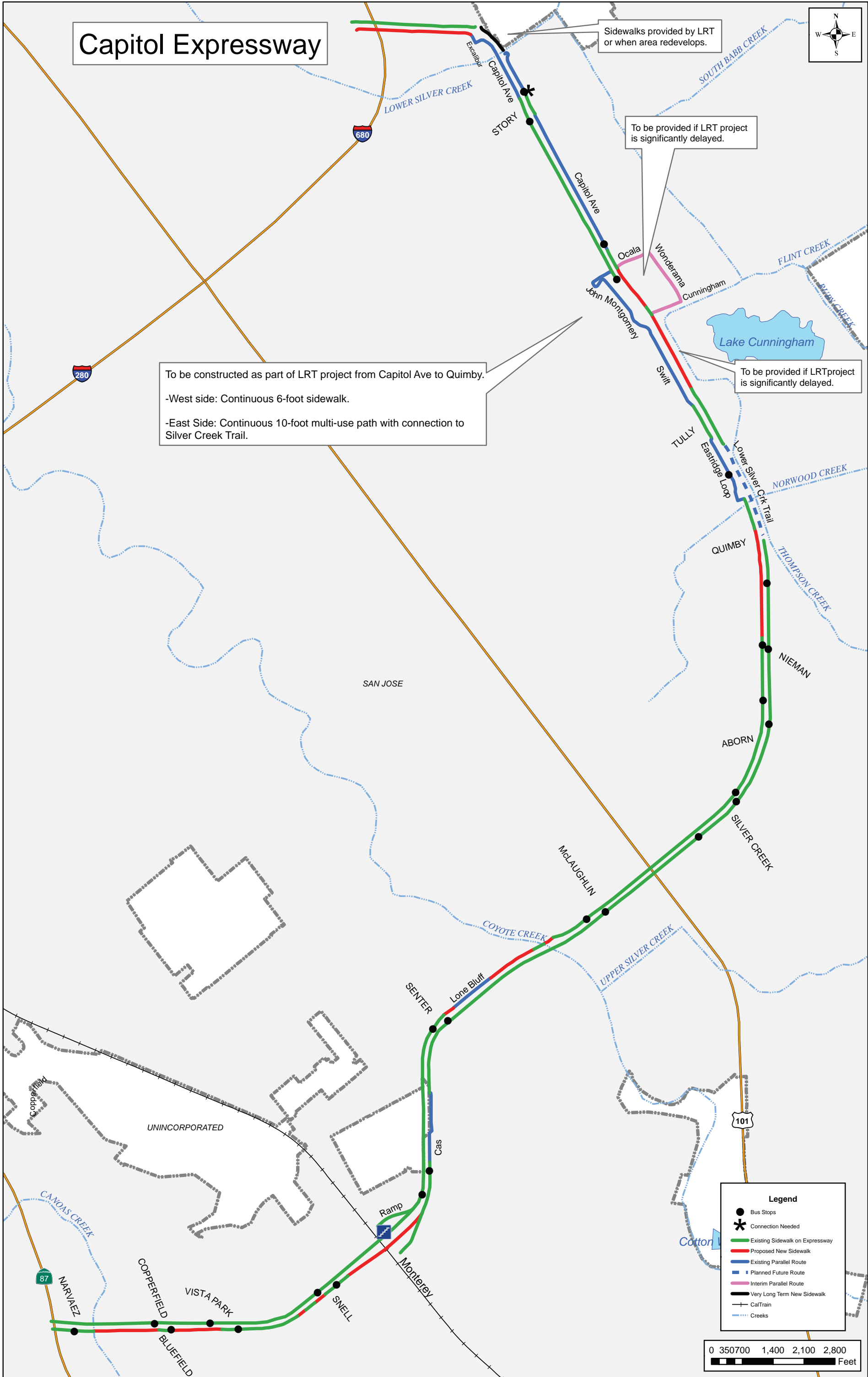
To be constructed as part of LRT project from Capitol Ave to Quimby.

- West side: Continuous 6-foot sidewalk.
- East Side: Continuous 10-foot multi-use path with connection to Silver Creek Trail.

Sidewalks provided by LRT or when area redevelops.

To be provided if LRT project is significantly delayed.

To be provided if LRT project is significantly delayed.



**Legend**

- Bus Stops
- \* Connection Needed
- Existing Sidewalk on Expressway
- Proposed New Sidewalk
- Existing Parallel Route
- - - Planned Future Route
- Interim Parallel Route
- Very Long Term New Sidewalk
- CalTrain
- Creeks

