

Homestead Road
Safe Routes To School



Community Meeting #1
November 26, 2018





Agenda

- I. Welcome and Introductions
- II. Study Overview and Existing Conditions
- III. Questions & Answers Session (10 minutes)
- IV. Open House

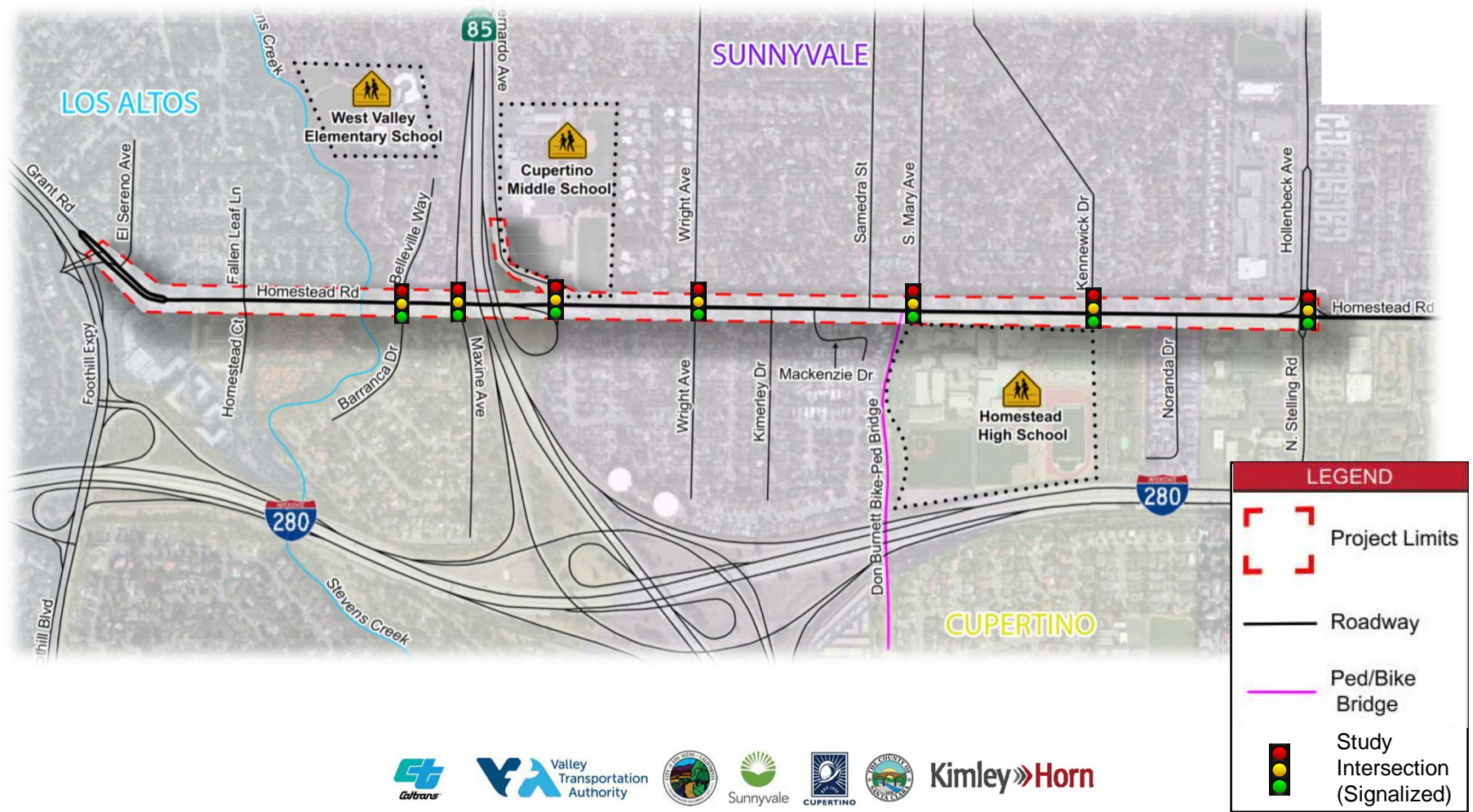
Please provide feedback at the two stations:

1. Tell us about yourself and how you interact with the study area - place a dot where you live (colors based on school) and use the matrix to tell us how you use the corridor.
2. Provide your insight into existing challenges and opportunities in the study area by placing a sticky note on the large corridor maps.

Homestead Road Safe Routes To School



Project Study Area





Project Background

- 1.5 mile corridor that connects 3 schools
- Heavily utilized bicycle/pedestrian corridor
- Lacks connected, low-stress bicycle/pedestrian network





Prior Community Comments

- Fallen Leaf Lane intersection difficult to navigate for autos, bicycles, and pedestrians
- Multi-use path ends at Stevens Creek
- Vehicular speeds
- Need better separation for bike lanes
- Part-time bike lanes not effective
- Congestion at SR-85 on-ramp and N. Stelling Road causes bicycle/pedestrian circulation issues





Project Objectives

- Identify near-term bicycle/pedestrian infrastructure improvements
- Support safe and efficient bicycle, pedestrian, and transit facilities
- Connect students to West Valley Elementary School, Cupertino Middle School, and Homestead High School
- Seek funding through grant applications



Homestead Road Safe Routes To School



Pedestrian Circulation

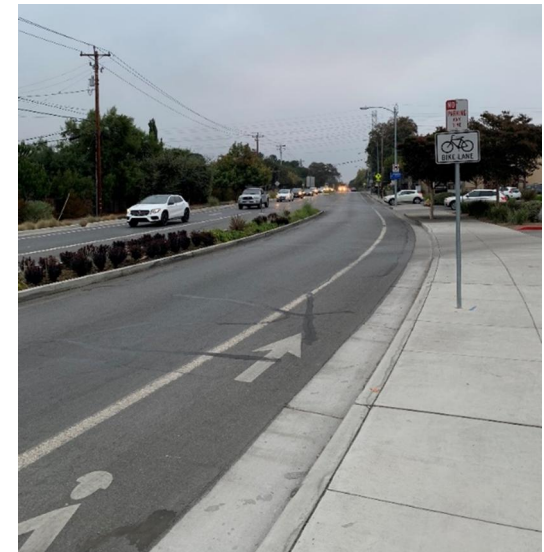
- Narrow sidewalks in some areas of the corridor
- Limited queueing areas at high volume intersections
- Lack of ADA compliant ramps at unsignalized intersections





Bicycle Circulation

- Lack of separation between bike lanes and vehicle lanes
- Multi-use path ends at Stevens Creek
- Wrong way biking along corridor due to limited infrastructure
- Congestion at major intersections causes circulation issues





Collision History (2011 to 2018)

- 32 total reported incidents that involved bikes or pedestrians
 - 1 pedestrian fatality at Mackenzie Drive (2011)
- Highest number of incidents occurred at N. Stelling Road
- Multiple incidents occurred mid-block between signalized intersections





Evaluation Criteria

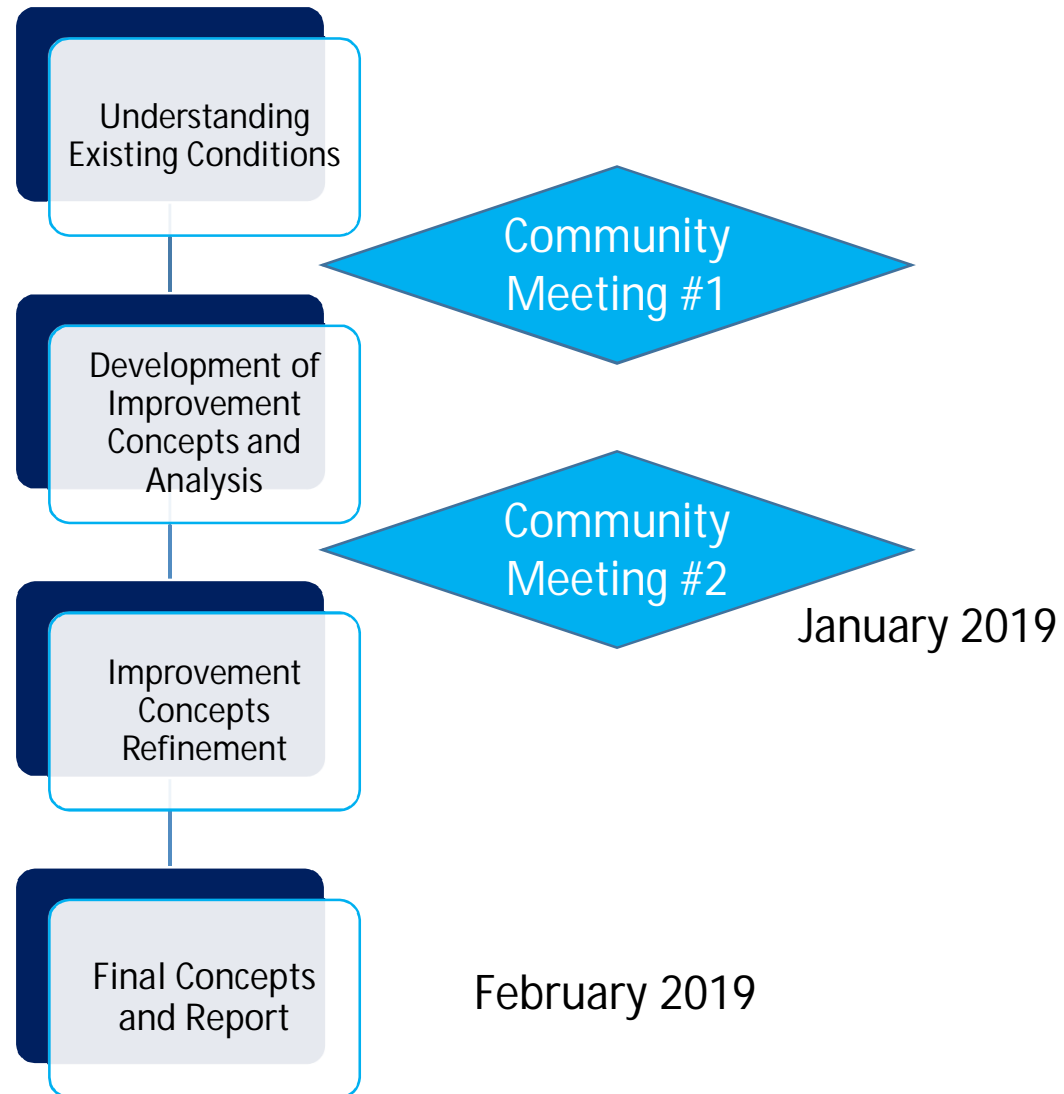
- Multimodal Circulation and Safety
- Corridor Access
- Auto Throughput
- Community Feedback
- Cost



Homestead Road Safe Routes To School



Project Process





Next Steps

- Development of Improvement Options
- Analysis of Improvement Options
- Presentation of Improvement Options at Community Meeting #2 (late January)





Other Opportunities to Provide Feedback

- Fill out a comment card here at the meeting
- Email any additional comments to:
RDA-HomesteadRoad.Study@rda.sccgov.org
- Visit our project website:
<https://www.sccgov.org/sites/rda/PnS/CP/Pages/Homestead-Rd.aspx>
- Attend our next community meeting (anticipated to be in late January)



Homestead Road Safe Routes To School



Q&A Session





Open House Objectives

- How do you use the corridor?
- What do you believe are the priorities for the corridor?
- What are the current issues/challenges with the corridor?
- What types of improvements would you like to see?





Station #1: Corridor Information and Needs

- Help us identify issues and challenges with the current corridor

Please write any concerns, comments, or improvement needs on a sticky note and place on the corridor information aerial.





Station #2: Characteristics

- Where do you live?
- How do you utilize the corridor?

Please place a dot on the map generally where you live.

Please place a dot on the matrix corresponding to the travel mode and school. This will give us a sense of how people are using the corridor.



Other Opportunities to Provide Feedback

- Fill out a comment card here at the meeting
- Email any additional comments to:
RDA-HomesteadRoad.Study@rda.sccgov.org
- Visit our project website:
<https://www.sccgov.org/sites/rda/PnS/CP/Pages/Homestead-Rd.aspx>
- Attend our next community meeting (anticipated to be in late January)

